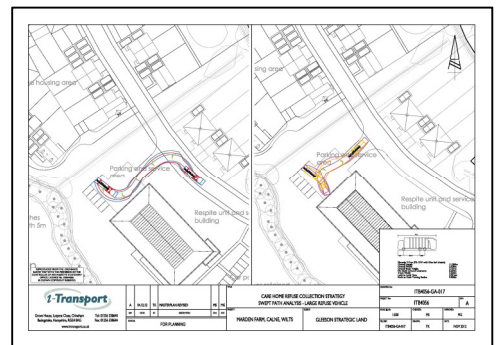


Case study: Marden Farm, Calne, Wiltshire



Hybrid application approved at appeal including 125 residential dwellings, a specialist 85 bed dementia and palliative care unit and associated public open space.

- APP/Y3940/A/13/2206076
- Greenfield site on the edge of the settlement boundary.
- Full planning application for a specialist care facility comprising 75 dementia care beds and a 10 bed palliative care unit with associated service building and an outline application for up to 125 residential dwellings including affordable housing, parking, gardens, amenity and public open space plus a community orchard, allotment site and associated ecological, drainage and landscape enhancement.
- Matters relating to highway safety satisfactorily addressed at appeal with transport specialist demonstrating sufficient consideration had been given and mitigation proposed within the scheme.
- Planning permission granted on 1st April 2014.

Sentinel House
Harvest Crescent
Ancells Business Park
Fleet GU51 2UZ

01252 360 300
www.gleesonstrategicland.co.uk

